

Need of the day

With highly penetrated reach of mobile devices, providing touch point applications on mobile is need of today. While device manufacturers provide major value addition by manufacturing variety of devices suiting many different end-users and their needs, it is a major challenge in providing touch point applications for all these mobiles. Sun Microsystems provides a common platform called Java Micro Edition (Java ME) to overcome this challenge but still there is a vast majority of functionality which might depend on proprietary APIs and JSR support.

Aftek realized the need of some application which would do checks on a device to build a compatibility check list.

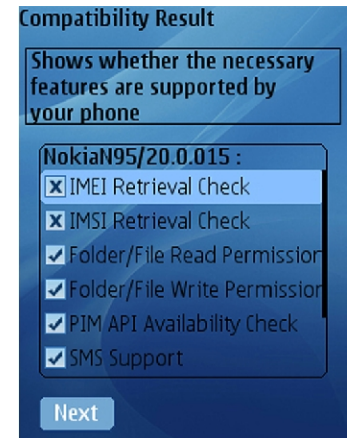
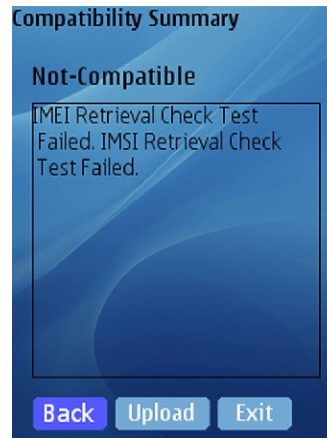
Solution

Aftek developed 100% Java ME based application which would perform specific tests on the device. Depending on whether a certain feature is essential or optional for running application, the application concludes whether the device is compatible or not.

Over the years Aftek has built extensive list of checks that are required in typical applications. Application is intelligent to provide hint to the end-user about missing features on the device.

Features

- ◆IMEI retrieval check
- ◆IMSI retrieval check
- ◆Folder/File read and write permission
- ◆SMS support check
- ◆GPRS support check
- ◆Availability of following JSR – PIM, SATSA etc
- ◆Upload report to central server
- ◆Device support matrix
- ◆Auto-start on boot-up
- ◆Detecting MIDP and CLDC versions



Benefits to the client

- ◆No manual testing required to check each and every functionality on all devices.

Aftek's Value-add

- ◆Testing services to customers using the application to arrive at quick supported device list.
- ◆Device certification services to the customers

Technologies

- ◆Java ME (J2ME)
- ◆MMAPI JSR-135, WMA JSR-120, PIM JSR-75, MTA JSR-253, Location API JSR-179, SATSA JSR-177

Compatibility Check - Windows Internet Explorer

http://172.16.2.12

Compatibility Check

Compatibility Check: The table below will help you know which mobile phones is compatible.

Device	IMSI	IMEI	PIM	Push Registry	File Read	File Write	GPRS
NokiaN95/20.0.015 ❌	❌	❌	✅	✅	✅	✅	✅
NokiaE90-1/0.34.84 ✅	✅	✅	✅	✅	✅	✅	✅
Nokia6500s-1/04.80 ❌	❌	❌	✅	✅	✅	✅	✅

Done Internet 100%